

Buy a Discovery
with twin airbags,
and look at
what you can save.



Yes, not one airbag, but two. In fact Land Rover is the only 4WD manufacturer to offer twin airbags.* So you not only save yourself, you'll also save your loved one. But wait, there's more! Impact-absorbing front crush cans, side intrusion beams, the strength of a real chassis and the grip of permanent 4WD and anti-lock brakes.** Prices start at \$44,995! For more information just phone us on 1800 809 308.



DISCOVERY
THE BEST 4x4x4

*Twin airbags standard on Discovery ES, optional on all other models. **ABS standard on Discovery ES. †Recommended retail price. Prices do not include statutory, dealer and on-road charges.

ULR ♦ LAND ROVER
WANDIN PARK
 EVENT & COUNTRY FAIR

TIME TABLE OF EVENTS
SATURDAY 4TH NOVEMBER, 1995

DRESSAGE: Main Arena			CROSS COUNTRY:		
8.00am	Junior Pre-Novice	Ring No. 4 & 6	12noon	Junior Pre-Novice and Pre-Novice	
8.00am	Pre-Novice	Ring No. 1, 2 & 5			
2.00pm	Junior Novice	Ring No. 5	SADDLE-UP YOUNG EVENT HORSE TROPHY:		
12noon	Novice	Ring No. 1 & 2	1.00pm	Movement in Hand	Ring No. 6
8.30am	Intermediate	Ring No. 3	2.15pm	Dressage	Ring No. 6
1.00pm	Advanced	Ring No. 4	2.20pm	Showing of Paces	Young Event Horse
2.15pm	Young Event Horse Trophy	Ring No. 6			Trophy Ring on Flat
SHOWJUMPING: ARENA NUMBER 2			<i>Please Note: The final phase - showjumping will be held on the Main Arena on Sunday at 9.15am.</i>		
12.30pm	Junior Pre-Novice & Pre-Novice				

SUNDAY NOVEMBER 5TH, 1995

MAIN ARENA		CROSS COUNTRY COURSE
9.00am	9.00am Young Event Horse - Showjumping Course Walk	
	9.15am Young Event Horse - Showjumping	
9.30am		
10.00am		10.00am Junior Novice
10.30am	10.30am Pony Club Team Games Championships	10.22am Novice
11.00am		
11.30am	11.30am Advanced Showjumping Course Walk	
	11.45am Parade of Carriages - Pairs and Four in Hands	
Midday	12noon Advanced Showjumping	12.00 Carriage Driving Display
12.30pm		12.30pm Intermediate
	12.50pm Piper	
	12.50pm Young Event Horse Trophy -Presentation (CMP & Lyn Boishrook)	
1.00pm	1.00pm Cutting and Reining Display	
	1.10pm Vintage Aircraft Fly-Past	
1.30pm	1.20pm First Heat of Shetland Grand National	
	1.40pm Second Heat of Shetland Grand National	
	1.45pm Croydon Dog Club Display (Flyball & Obedience)	
2.00pm	2.10pm Parade of Yarra Glen & Lilydale Hunt Club Hounds & Riders to Cross Country at 2.20pm	2.20pm Hunt Club Display
	2.25pm Final of Shetland Grand National	
2.30pm	2.35pm Piper & Presentation of Grand National Ribbons	2.40pm Advanced Cross Country
	2.40pm Intermediate Showjumping - Course Walk	
	2.40pm Croydon Dog Club Display (Agility)	
3.00pm	3.00pm Intermediate Showjumping	
3.30pm		
4.00pm	4.00pm Victorian Light Horse Ceremonial Regiment	3.40pm Finish
4.30pm	4.30pm Dressage to Music - Mary Hanna and Mosaic	
	4.45pm Piper & Presentation of Prizes	
		SHOWJUMPING: Junior Novice will be held in the Showjumping arena No.2. at 12.30pm and the Novice at 1pm.

SEVEN SPORT SUPPORTS WANDIN



Fleet Management

**Proud to sponsor the Wandin Park Event &
Country Fair**

Good Luck to all competitors!

**275 Williamstown Road Port Melbourne 3207
Phone: (03) 9205 9205**

SPECIAL ATTRACTIONS

Main Arena Commentary: Jill Sinclair, Hugh Coleby and Anna Sharpley

Young Event Horse Trophy:

9.00am

This special event is sponsored by Saddle-Up and designed to encourage breeders and trainers developing event horses of the future. The details of the competition are covered more completely on the next page, but competitors are judged in sections covering dressage, conformation and showing of the paces (all completed on Saturday). The final phase of Showjumping is presented in the main arena commencing at 9am Sunday.

Cross Country Course Walk

10.00am & 2.00pm

Come and join top Australian international rider Danny Wilson on an informative walk of Mark Phillip's Wandin Cross Country Course. Meet adjacent to the Cross Country start at 10.00am. A second walk takes place at 2.00pm.

Pony Club Team Games Championship:

10.30am

There is plenty of action to be seen with teams from Yarrambat, Macedon, Upper Yarra, Cranbourne and Warragul compete for the Noble Perpetual Trophy. There will be four races - Stick Pegging Relay, Barrel and Baton and Relay, Bending Relay and Flag and Barrel Relay. These are the five finalists of competitions between Pony Clubs around the zone. Action starts at 10.30am in the main arena.

Parade of Carriages

11.45am

A display of the popular equestrian activity of Carriage Driving including tandem, pairs and four in hand team. The carriages will proceed to the Cross Country course immediately following the main arena display for a mini marathon, the carriage driving equivalent of the cross country.

Advanced Showjumping:

12 noon

Some of the finest eventing horses in the land compete in the showjumping phase of the National Championships. The course is designed by the top international course builder John Valance. We gratefully thank the members of the Melbourne Showjumping Club for providing the equipment and officials for the showjumping.

Vintage Car Display

12.30pm

The Vintage Drivers Club arrives at 12.30pm on Sunday and the cars will be on display adjacent to the Marquee and the Main Arena. The cars were made between 1917 and 1930 and include Fords, Chevrolets, De Soto, Dodge, Chrysler and Austins. Club Captain Ron Neville will be on hand to answer questions.

Vintage Aircraft Fly-Past

1.10pm

Those magnificent men in their flying machines. Fly over by vintage aircraft, Tiger Moths from yesteryear to surprise and delight the main arena crowd.

1941 Ryan PT-22. This aircraft still has its original paint scheme. It is an ex-WW2 trainer built for the United States Army Air Corps at San Diego. The U.S. didn't actually have an Air Force as such until 1942.

Colour: Polished Silver fuselage with yellow wings - USAAC markings. The aircraft is a low wing with a large radial engine. **Pilot:** Bob Atwater

1950 De Havilland Chipmunk. This aircraft is in the Red and White colours of the RAF. The aircraft was built as a trainer for the Royal Air Force - replacing the Tiger Moth as the primary training aircraft. This aircraft was 24th off the production line and is, in fact, the oldest Chipmunk still flying. The aircraft is a low wing.

Pilot: Peter Bernadt from Upwey Newsagency.

1940 Fairchild 24-W. This aircraft was built in the USA as an aerial observation plane for the Royal Air Force. This aircraft served in Burma. The aircraft has been restored back into its original colour scheme of the US Army Air Corps. Silver fuselage, Red cowl and yellow wings. This aircraft is a high wing with a radial engine and is a cabin-type aircraft. **Pilot:** Steve Newing. The Pilots are all part of the Antique Airplane Association of Australia.

7- Eleven Shetland Grand National:

**Heats 1.20pm
Final 2.25pm**

A hotly contested race for our young riders on their Shetland ponies. Months of training go into the preparation of these horses. The jumps consist of hay bales and the 'race track' is around the main arena. Come and see the action- heats at 1.20pm and final at 2.25pm.

Croydon Dog Club Display

1.45pm

There is a lot more to training your dog than "sit and stay"! Members of the Croydon Dog Club demonstrate the level of training their canine friends have achieved, whilst everyone has a bit of fun.

Yarra Glen and Lilydale Hunt Horses & Hounds

2.00pm

The Huntsman for the Yarra Glen & Lilydale Hunt Club, Nick Boulton today parades 10 couples of English Foxhounds in a display in the Main Arena and also on the Cross Country course at 2pm. He is assisted by members of the club, who will be riding in normal hunting attire. The Yarra Glen & Lilydale Club has been established in the Yarra Valley for over 90 years and has some 300 members. Nick and the members invite you to inspect the hounds at the conclusion of the display where they will be pleased to answer your questions.

Intermediate Showjumping:

2.40pm

This class was introduced to the Wandin program for the first time in 1993. It is designed particularly for horses going on to compete at the Melbourne International 3 Day Event (November 16-19, 1995). The horses are the stars of tomorrow and it makes it an interesting challenge to pick the talent. Showjumping height for Intermediate horses is 1.15metres.

Victorian Light Horse Ceremonial Regiment:

4.00pm

Led by Lt. Col L.S. O'Toole the eight members of the Light Horse portray an important part of Australia's history. Their display, all performed to music, is non-stop action with bayonets, lances and swords drawn. The Light Horse are frequently seen at formal military occasions and we are honored to have them at Wandin.

Mary Hanna and Mosaic

4.30pm

Mary Hanna and Mosaic represented Australia at the last World Championships at the Hague. Mosaic has been Australian Grand Prix Champion and was the best performed of the Australian team at the World Championships. This year, Mosaic and Mary went to Europe and competed in the Australian team at the European Championships and were again the best performed Australian combination. Mosaic has only been back in Australia for three weeks and is busy preparing for the Volvo Pacific League Final and the Australian Championships. We are privileged to have Mary and Mosaic here today to perform for us.

Presentation of prizes:

4.45pm

Congratulations to all placegetters and well done to each of our 350 competitors. The mounted presentation is a spectacular conclusion to a busy day.

Land Rover Courtesy Vehicle:

All day

Tours of the Cross Country course are provided with the compliments of ULR Land Rover. Vehicles pick up from the area below the hospitality marquee.

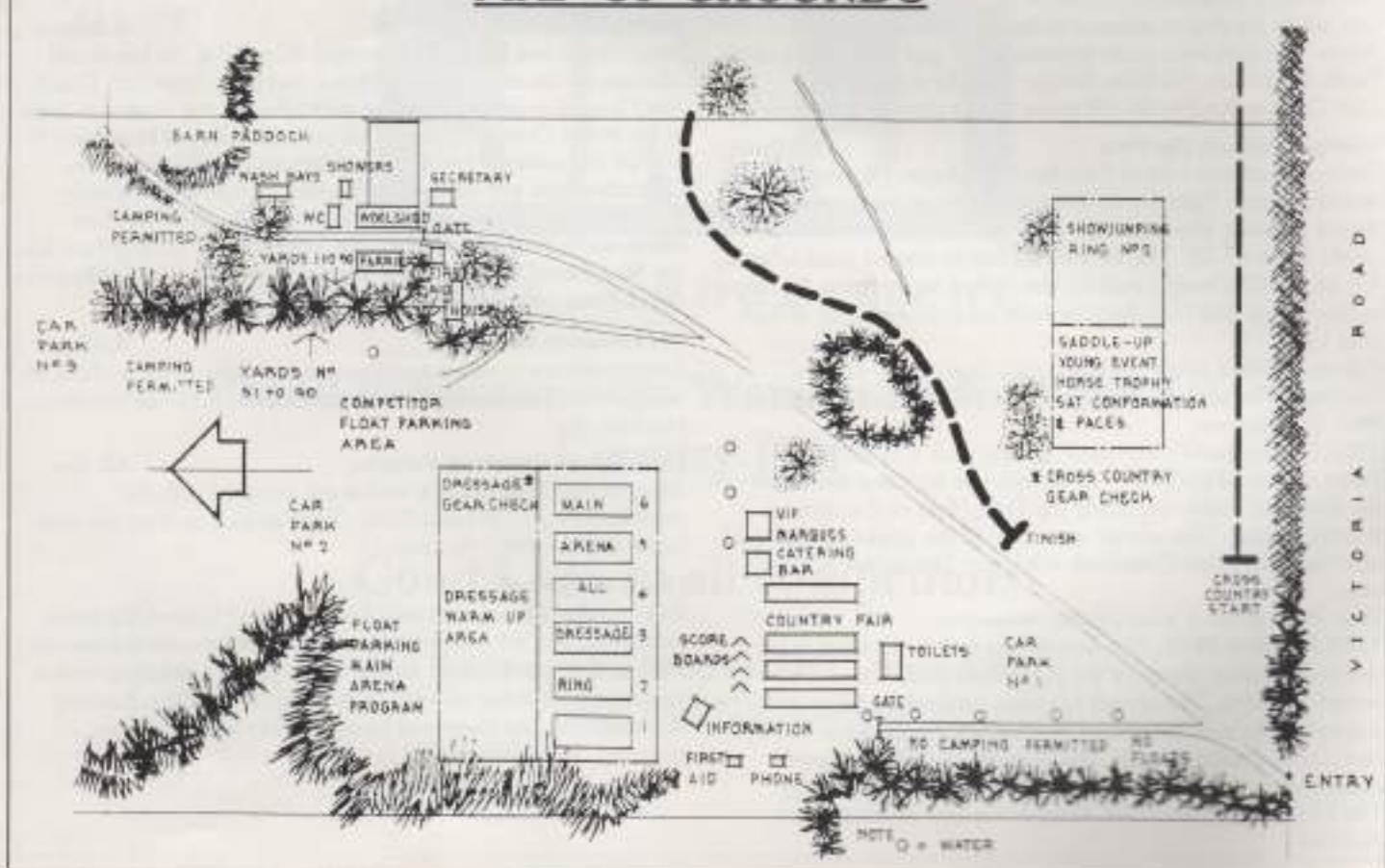
Horse Weighing

Ever wondered how much your horse weighs? Cut out the guess work when you are calculating feed and parasite control measures. Wandin sponsors Equimec have a free electronic weighing service operating on Sunday adjacent to the Secretary's office. Equimec representative Lee Hearn will be on hand to answer all your questions on parasite control in your horse.

INTERMEDIATE DRESSAGE TEST ** 1992 FEI TWO-STAR THREE DAY EVENT DRESSAGE TEST	
1. A	Enter in working trot Halt - Immobility - Salute Proceed in working trot
2. C MXK KAF	Track to the right Change rein in medium trot (rising) Working trot
3. FB B BC	Shoulder in to the left Volte to the left (10m diameter) Working trot
4. C CH	Halt - Immobility 4-6 seconds Working trot
5. HXF FAK	Change rein in extended trot Working trot
6. KE E ES	Shoulder in to the right Volte to the right (10m diameter) Working trot
7. SCM	Medium walk
8. MB	Working canter right
9. BEB B	Medium canter (circle 20m diameter) Working canter
10. FDB BMC	Working canter (F-D half circle 10m diameter) Counter canter
11. C	Simple change of leg (3-5 steps in walk)
12. CHE EBE E	Working canter left Medium canter (circle 20m diameter) Working canter
13. KDE EHC	Working canter (K-D half circle, 10m diameter) Counter canter
14. CM MV	Medium walk Change rein in extended walk
15. VKAX	Working trot
16. X	Halt - Immobility - Salute
Leave arena at a walk on a long rein at A	

ADVANCED DRESSAGE TEST F.E.I. THREE/FOUR STAR 1990	
1. A I	Enter at working canter Halt, Immobility, Salute. Proceed at working trot
2. C MRXVK KA	Track to the right Medium trot (rising or sitting) Working trot
3. A BxB	Continue working trot, from corner shoulder-in (left) Circle to the left 10m diameter
4. BG GCH	Half pass (left) Working trot
5. HXF FA	Change rein at extended trot Working trot
6. A	Halt, Rein back 5 steps. Proceed at working trot without halting
7. A EXE	Continue working trot, from corner shoulder-in (right) Circle to the right 10m diameter
8. EG GCM	Half pass (right) Working trot
9. MXK KA	Change rein at extended trot Working trot
10. AF FS SH	Medium walk Change rein at extended walk Medium walk
11. HCR	Working canter
12. RBEBP PF	Medium canter, (BEB: Circle 20m diameter) Working canter
13. FDB BRMCH	Working canter (FD: Half circle 10m diameter) Counter canter
14. HXF FA	Change rein at extended canter Working canter
15. AK KR RM	Medium walk Change rein at extended walk Medium walk
16. MCS	Working canter
17. SEBEV VK	Medium canter, (EBE: Circle 20m diameter) Working canter
18. KDE ESHCM	Working canter (KD: Half circle 10m diameter) Counter canter
19. MXK KAL	Change rein at extended canter Working canter
20. LG G	Working trot Halt, Immobility, Salute. Leave arena at a walk on a long rein at A

MAP OF GROUNDS



Phone: (059) 64 4957

PARKERS

RETRAVISION

SHOPPING CENTRE
WANDIN NORTH 3139

**FOR ALL YOUR ELECTRIC
OR GAS APPLIANCES AND
COMMUNICATION EQUIPMENT**

Top of the range



Country Clothing

Akubra Hats, Driza-bone, R.M. Williams Boots, Moleskins, Belts, Shirts, Swandry Bush Shirts, Thomas Cook Hats, Oileskins, Moleskins, Yakka Workgear, Blundstone Boots.

Greenfields

OPEN 7 DAYS A WEEK

Maroondah Hwy., Lilydale (1 km East of shops) Phone: 735 5722

EQUINADE



THE LEADING HOOF CARE PRODUCTS

- Hoof Dressing Grease
- Hoof Lube
- Medicated Hoof Saver
- Stockholm Tar

Australian Made
Australian Owned

*Available from your local
Equestrian Supplier*

Ride the Bush of Australia or compete in the arenas of Europe



We stock Australian made products:

•Akubra •R.M. Williams •Stockman Coats •Drizabone •Stock Whips

We have all your Eventing, Dressage, Showing and Pleasure riding requirements in stock or made on the premises to your specifications, using the best quality leather and workmanship. Visit us on your way to the wineries of the Yarra Valley and Healseville Sanctuary.

ALL CREDIT
CARDS &
EFPOS
ACCEPTED



OPEN 7 DAYS

403 Maroondah Highway, Ringwood, 3134 (Melways Ref: 50 B5)
Phone: (03) 98701146 Fax: (03) 98795352

Mail Order Welcome
Local & Export
also
Duty Free



THE SADDLE - UP YOUNG EVENT HORSE TROPHY



First introduced to Wandin Park in 1989, this event continues to grow in popularity. The event is designed to both recognise and encourage breeders and trainers in producing the correct type of young horse that is considered to be the best material to make a top eventing horse.

The class is open to 4 and 5 year olds and the competition is divided into four sections with a different judge for each section.

SECTION 1: MOVEMENT IN HAND Judge - Ms Anna Herman 25% of total score

The judge is looking at the conformation and movement of the horse.

Saturday 1.00pm - Ring 8

SECTION 2: DRESSAGE Judge -Mr Brian Schrapel 25% of total score

Unlike a normal dressage test the judge does not assess individual movements and the judge may stand anywhere to be able to get the best view.

The judge is looking at the potential of the horse and must discount the effect of the rider. Three correct, elastic and regular gaits through a swinging back are what is sought.

Saturday 2.15pm -Ring 8

SECTION 3: SHOWING OF PACES Judge - Ms Sharon Howell 25% of score

The judge asks each rider to show their horse's paces including the gallop.

Saturday 2.20pm -Young Event Horse Ring

SECTION 4: JUMPING Ms Lucinda Green 25% of score

The judge is looking for potential and normal showjumping penalties do not apply. A horse with a fence down through inexperience may score higher than a weak horse that may rattle three, but jumps clear.

Sunday 9.15am Main Arena

YOUNG EVENT HORES ENTRIES

NO.	RIDER & OWNER	HORSE	BREEDING	BREEDER & TRAINER	SECTION				TOTAL
					1	2	3	4	
351	ROSS SPALDING NSW Narelle Meade	ELLIE Ch.M.16.1h4yrs	S: Al Hareb D: Fleche D'Or	Unkown Rider					
352	MEGAN MCNAUGHT Rider	TIME WILL TELL Blk/Bm G.16.2h 5yrs	S: Sowester D: Fortell	Sylvia McLachlan Rider					
353	KATHY MINCHEN Rider	LORD BURNIE Bay G.16.3h 5yrs	S: No Alcoholic D: Orneo Star	P.J. Walton Rider					
354	ANDREA CHILDS Rider	FAR HORIZONS Bay M.16h 5yrs	S: Sargent Yorke D: Just A Hunch	Unkown Rider					
355	JO HINTON Rider	SAUVIGNON ERA Grey G.16.1 1/2h 5yrs	S: Gold Era D: Fatal Attraction	Sandra Ayres Rider					
356	JONATHAN MCLEAN Mr & Mrs J McLean	KELLOGGS Ch.S.16.1h 4yrs	S: Bletchway D: Olazon	Unkown Rider					
357	SUE LESLIE Kade Brennan	PETER THE RED Ch.G.16.1h 5yrs	S: Clear Choice D: Galing- Galing	Owner Rider					
358	INGRID KIMPTON C & I Kimpton	FLYING ANT D.Bm.S.15.3 4yrs	S: Jazz Boy(NZ) D: Storm Symbol	Unkown Rider					
359	FIONA TELFORD Rider	RAIN WARRIOR Grey G.17h 5yrs	S: Unknown D: Unknown	Unkown Rider					
360	PRUE BLACKNEY Rider	LADY ALETHEA Bm M.15.3h 5yrs	S: Prince True(USA) D: Pearl Symphony	Unkown Rider					
361	WENDY SHEPHERD Rider	SOMETHING WICKED Ch.M.16.2h 5yrs	S: Scruples D: Better By Half	Unkown Rider					
362	DI SHORLAND Rider	SUNSET SERENADE Ch.G.16.2h 5yrs	S: Red Anchor(NZ) D: Snow Belle	Unkown Rider					
363	NONI WALTER Rider	DARING KNIGHT Bay G.17h 5yrs	S: Tri-Flow D: Panola	Unkown Rider					
364	ROSEMARY GAWLER Rider	RAINBOW GOLD Ch.M.16h 5yrs	S: Limbo Rock D: Marquilla	Grace Gawler Rider					
365	BILL CHRISANIS Joanne Malloy	CLASS DECISION Blk/Bm G.16.3h 4yrs	S: War Kingdom D: Mine Heart	M. J. Burton Rider					
366	JULIE WILSON Rider	JOEL Bm G.16h 5yrs	S: King D: La Chaton	Gordon Beck Rider					
367	YASEMIN CONSTABLE Rider	BRAMLEA BRIAR Bay M.17h 5yrs	S: Wunder(IMP) D: Rosie	Meredith Jones Rider					
368	JULIA GIBSON Rider	ANOTHER DAY Grey G.16.2h 4yrs	S: Balmoral Boy D: Holiday	Rider Rider					
369	TANYA DUNCAN Rider	SNAP DECISION Grey G.16.1h 5yrs	S: Favoured Bay D: Bellingham	Unkown Rider					
370	MICHELLE ATKINSON C.Wallace	WONDAREE ROSCHENE Ch.F.16.1h 5yrs	S: Rangatera D: Sofina	Cate Wallace Rider					
371	ANDREW BAIRD Rider	TILLIESHOGLE D.Bay G.16h 4yrs	S: Unknown D: Unknown	Unkown Rider					
372	NINA CLARKE Rider	LOCKLEY'S PARK FINNIGAN Bm G.16h 5yrs	S: Delamore Echo D: Lunic Yandella	Anne Goble Rider					
373	AMANDA ROSS Rider	LONDON'S NIGHT OWL Blk/Bm G.16.1h 5yrs	S: Star of the Majal D: Fairy Bold	Unkown Rider					
374	LIANA KEARNEY Rider	REVERSE JAM Grey G.16h 5yrs	S: Thorston D: Inn Again	Rider Rider					
375	VANESSA ROWE Mr W Griffiths	EDDIE THE EAGLE Bay G.16.1h 5yrs	S: Arctic Lord D: Cornola	Barbara Ivill Rider					
376	GILLIAN ROLTON SA Rider	OBSESSIONS Bay, G 17h 5yo	S: Southern Appeal (USA) D: Pebbings Star	Mr & Mrs F. Stamp. SA Rider					
377	LISA WADDELL Rider	KHANCOBAN Ch. G. 17h 5yo	S: Zephyr D: Dudley's Daughter	Unkown Rider					

CARRIAGE DRIVING CHALLENGE

Presented by Yarra Valley Harness Driving Club Inc.
and Australian Driving Society (Vic. Branch) Inc.

Carriage Driving is the fastest growing Equestrian sport in the world and commands spectator crowds between 100,000 and 200,000 at major events in Europe.

Here in Australia we have events organised by clubs affiliated with the Australian Driving Society Inc. where classes are run for single horses and ponies of all sizes as well as pairs, tandems and teams.

The events have much in common with ridden three day events with the same sequence of Dressage, Marathon (Speed and Endurance) and the final obstacle or Cone driving Course (Equivalent to jumping at a 3DE).

Dressage judges the freedom, regularity of paces, harmony, lightness, ease of movement, impulsion and the correct positioning of the horse/s on the move. The competitor is also judged on their driving, accuracy and command of the horses.

The Marathon is the most exciting part of the event and takes place over a 20 to 27 kilometre course, including five to eight timed marathon obstacles. The final phase, obstacle driving, tests the fitness, obedience and suppleness of the horse after the marathon and the skill of the competitor. The course is constructed of measured traffic cones with balls on top, the object being to negotiate the course without dislodging the balls.

The Yarra Valley Harness Driving Club is extremely grateful to the Wandin Park Association for the opportunity to display aspects of this most exciting sport on the main arena on Sunday afternoon which will be followed shortly afterwards by a mini-marathon through a new course designed by renowned course designer, Graham Martin and most generously constructed by the Wandin Park Association.

The Yarra Valley Club caters for all people interested in driving and regularly conducts pleasure drives, social functions and meetings as well as carriage driving events and shows.

For further information, please visit our display at the event or contact Rachel Haslau on (057) 951 547 or Sandy Smith on (059) 644 949

CARRIAGE DRIVING DISPLAY

1. **Mrs Margaret Bowen** Driving a pair of registered Shetlands.
2. **Miss Alyson Mills** Driving a pair of much loved family ponies, Penny and Blossom.
3. **Miss Caroline Wiseman** Driving a pair of extremely versatile New Forest Ponies.
4. **Mr Peter Harkness** Driving a pair of Cobs.
5. **Mr Paul Ket** Driving a pair of Warmblood horses.
6. **Mr Gavin Robson** Driving a pair of Thoroughbred - Hackney X horses.
7. **Mrs Rachel Haslau** Driving a team of Welsh Ponies

YARRA GLEN MOWER & TRACTOR CENTRE

SPECIALISTS IN **KUBOTA TRACTORS,
MOWERS & MACHINERY**



PH. 9730 1988

INTRODUCTION TO HORSE TRIALS

Wandin Park Horse Trials is a One Day Event. In the world of eventing there are also Two Day and Three Day events.

There are three phases of competition in a One Day Event: Dressage, Cross Country and Showjumping, each requiring skills of thorough training, precision and boldness.

The horse must demonstrate the controlled discipline of the dressage test, yet be bold and possess the stamina to jump over 20 fences across 3km of the cross country course. He must then be able to show sufficient suppleness after the endurance test to complete a showjumping round cleanly.

The entire competition is scored on a penalty point basis with the horse and rider scoring the lowest number of penalty points winning the competition.

There are six different classes of competition at Wandin Park Horse Trials. The classes are:

- JUNIOR PRE-NOVICE
- PRE-NOVICE
- JUNIOR NOVICE
- NOVICE
- INTERMEDIATE
- ADVANCED

The class entered depends on the horse's past performance with performance or grading points being accumulated with each placing in a competition. This ensures that horses with similar performances compete against each other.

DRESSAGE

In the Dressage test a series of set movements are executed and each one is marked by the judges, together with marks for general performance. During the dressage test, the judges look for the horse to move eagerly and energetically forward whilst remaining responsive to the rider's direction.

The dressage test is ridden in an arena 60 x 20 metres and the test must be executed from memory.

DRESSAGE TESTS: Advanced: FEI three star/four star 1990
Intermediate: FEI two star 1992
Novice: FEI one star 1992
Pre-Novice: EFA Test 1.4

The penalty points incurred in the dressage are carried forward to the cross country and showjumping phases.

CROSS COUNTRY

Wandin Park has four separate courses, each designed by Capt. Mark Phillips. A recent change to the rules now counts jumping efforts rather than the number of fences in determining the test for horse and rider. In Junior and Pre-Novice there are 25 jumping efforts over 21 cross country fences. Novice there are 30 jumping efforts (24 fences). Intermediate there are 31 jumping efforts (26 fences) and Advanced 37 jumping efforts (29 fences). Penalties can be incurred in a number of ways.

PENALTIES:

1st refusal, run out or circle of horse at a jump	20 penalties
2nd refusal, run out or circle of horse at same jump	40 penalties
3rd refusal, run out or circle of horse at same jump	Elimination
Fall of horse and/or rider at jump	60 penalties
Second fall of horse, and/or rider at obstacle	Elimination
Error of course not rectified	Elimination
Omission of obstacle or boundary flag	Elimination
Re-taking of an obstacle already jumped	Elimination
Jumping obstacle in wrong order	Elimination
For every commenced period of 1 second in excess of time allowed	.4 penalty
Exceeding the time limit	Elimination

What is a refusal?

A horse is considered to have a refusal if it stops in front of the obstacle to be jumped. A stop, followed immediately by a standing jump, is not penalised. The horse may step sideways but if the horse steps back even a single pace, voluntarily or not, or if the halt is prolonged, this constitutes a refusal.

If a horse that has already stepped back once, is re-presented at the obstacle and halts or steps back a second time, or if the halt is prolonged and the competitor redoubles or changes his effort, still without success, this constitutes a second refusal and so on.

SHOWJUMPING

The jumping tests consists of one round with obstacles no higher than:

Junior & Pre-Novice:	1.05m
Novice:	1.10m
Intermediate:	1.15m
Advanced	1.20m
The test must be carried out at the following speeds	
Advanced:	400mpm
Intermediate:	375mpm
Novice:	350mpm
Junior & Pre-Novice:	300mpm

PENALTIES:

First disobedience	10 penalties
Knocking down an obstacle	5 penalties
Second disobedience in the whole test	20 penalties
Third disobedience in the whole test	Elimination
First fall of horse and rider	30 penalties
Second fall of horse or rider	Elimination
Error of course not rectified	Elimination
Retaking an obstacle already jumped	Elimination
Jumping obstacle in wrong order	Elimination
For every commenced second in excess of the time allowed	.25 penalties
Exceeding the time limit (which is twice the time allowed)	Elimination

Special thanks to Melbourne Showjumping Club for use of their equipment and the members for their assistance.

Cross Country Walk

Sunday at
10am and 2.00pm

Join top international rider
Danny Wilson and get a riders
view of Mark Phillip's
Wandin Course.

Walk leaves from Cross Country start

D O M A I N E
CHANDON



from the Australian winery of
MOËT & CHANDON

COUNTRY FAIR EXHIBITORS

EXHIBITOR	CONTACT	PHONE
• Aldebarn Equine Art, Original art work, limited edition art prints	Melissa Souter	BH (03) 9796 2806
• Jim Barrett, Oil paintings, equine and other	Jim Barrett	BH (059) 642 429
• Buckskin Jodhpurs, Jodhpurs and riding APPAREL	Wendy Burton	BH (03) 728 3761
• Capalla Park Alpaca Stud, Alpacas	C/- Raelene Strong	BH (059) 429 048
• Centaur Saddles, Saddlery	M & K Shingles	BH (03) 571 2065
• Delisle Park Show Horse Accessories,	Brian Culliffe	BH (059) 401 978
• Bruce Heggie Pottery, Handthrown pottery	Bruce Heggie	BH (054) 353 609
• Invincible Bandages, Equestrian bandages	Harvey Liebman	BH (057) 822 425
• Sonia Lees, Lycra jods, and tops	Sonia Lees	BH (03) 9782 1526
• Amanda Lithgow, horse and dog portraits, Italian leather belts	Amanda Lithgow	BH (03) 9739 1763
• Marcus Oldham College,		BH (052) 433 533
• Mariah Hill Alpaca Ranch, Alpacas	Raelene Strong	BH (059) 429 048
• National All Breeds Private Sale Register,	Andy Rouget	BH (059) 962 261
• Pegasus Horse Floats, Horse floats	John Nicholls	BH (03) 728 6833
• Project Hope Horse Rescue,	Katrine Papworth	BH (03) 9460 9846
• Sandra Scott-Smith, Saddle blankets, rugs, float boots	Sandra Scott-Smith	BH (056) 291 002
• Saddle - Up, Saddlery and horse gear	Lyn Biesbroek	BH (03) 9870 1146
• Sea Crystals Supplement	Maurice Massey	BH (046) 474 033
• Annie Sedgewick, Horse boots and other gear	Annie Sedgewick	BH (03) 9592 6210
• Stockcare , Fieldguard rubber floor mats	Michael Baden-Powell	BH (03) 9889 1512
• Southern Covers, Horse rugs	Maurice Massey	BH (046) 474 033
• Teamster Sheepskins, Sheepskin rugs, seat covers		BH (03) 9729 5605
• Tuxedo Books, Equestrian books	Philip Robinson	BH (059) 757 200
• D.M. Widdows, Oilskin and buckskin coats, bushgear also miniature pony stud	D.M. Widdows	BH (059) 872 2942
• Patricia Van Kesteren, Equine Art	Patricia Van Kesteren	BH (03) 9782 5475
• Whithorse Insurances, Equestrian insurance	Brian Roberts	BH (03) 9899 1729
• Yarra Valley Harness Club, Harness driving	Rachel Haslau	BH 015 685 344

REFRESHMENTS

• Aikman Professional Services, Hot dogs, drinks, snacks	Sue Aikman	BH (03) 9722 1284
• Coffee Pronto, Coffee, hot chocolate, hot beverages	Wendy Robinson	BH (03) 9439 7339
• Paddys Victoriana Oven, Hot baked potatoes	Katrina Rough	BH (03) 9844 3982
• Reed Bros. Donuts	Tony Reed	BH (03) 9562 3000
• Tommy's Taters, Baked potatoes, spring rolls	Tom Baker	BH (03) 9723 1077
• Mr Whippa, Ice Cream and drinks	Steve Nicolaou	BH (03) 9546 6897

ENTERTAINMENT

• Simon Mobile Manageri, Mobile animal nursey	Simon	BH (03) 9737 9524
• Murandy Music	Rudy Van Den Bovenkamp	BH (03) 9754 5540

Enquiries for participation in next year's Country Fair should be directed to Mr John Anker (059) 644 613

**Thank you to Domain Chandon for their generosity in supplying
Champagne to the Wandin Park Horse Trials.**

GENERAL CONDITIONS - WANDIN PARK HORSE TRIALS

1. These Horse Trials will be conducted under the E.F.A. rules for official Horse Trials 1993 and the amendments since that date.
2. **LIABILITY.** Neither the Organising Committee nor the Equestrian Federation of Australia accept any liability for any accidents, damage, injury to horses, owners, riders, groomers, officials, spectators, ground or any other person or property whatsoever.
3. **RESERVATION.** The organisers reserve the right (a) to cancel any class or event (b) to divide any class (c) to alter the advertised times (d) to refuse any entry, with or without stating the reason (e) to alter the horse's class within its grading (f) to combine any classes.
4. **FORBIDDEN ASSISTANCE.** Outside assistance is forbidden, under penalty of elimination. Any intervention by a third party, whether solicited or not, with the object of facilitating the task of the rider or helping his horse, is considered forbidden assistance. Similarly it is forbidden for a

competitor to join or accept a lead from another.
It is forbidden for a jump judge or official to call back or assist a competitor by directions to rectify an error of course.
Catching a loose horse, helping the rider to adjust his saddle or to remount after a fall is permitted. In such a case, the course must be resumed at the exact spot at which it was interrupted. Whether or not a competitor has received forbidden assistance will be decided by the E.F.A. Steward.
5. All dogs must be kept on leads at all times.
6. **PRESENTATION OF PRIZES.** The prizegiving will take place at the conclusion of the event. All competitors must present themselves correctly attired and mounted for presentation of prizes.

SOME WILL, SOME WON'T

Very few horses will reach their full potential and end up as champions. Foals should be given every opportunity to realise their potential, because it takes more than good bloodlines to make a champion.

Optimum performance does not come easily.

Speed, endurance, continuing good health and improved all-round performance are what EQUIMEC® is designed to help you deliver through better control of parasites.

Whether you are a breeder, owner or trainer, if producing top horses matters to you, use EQUIMEC® in a regular parasite control programme.

AGVET Division of Merck, Sharp & Dohme (Australia) Pty. Limited, South Granville, NSW 2142, Incorporated in NSW. EQUIMEC is a registered trademark of Merck & Co., Inc., Rahway, New Jersey, U.S.A. © Merck & Co., Inc., 1990. All rights reserved. S&D MSD 855.

A black and white photograph of two horses running towards the camera in a grassy field. The horse on the left is a light-colored horse with a white blaze on its face and white markings on its lower legs. The horse on the right is a darker-colored horse. In the background, there is a wooden fence and some trees.

Equimec
The Original

FENCE LIST

ADVANCED

- 1 Good Year Arch
- 2 Steeplechase
- 3 Street's Hay Feeder
- 4 Bega Cheese Factory
- 5ABC Equimec Stockman's Hut
- 6AB Range Rover Bank
- 7 Oxer Massif
- 8 Stables
- 9 Road Closed
- 10 Broken Bridge
- 11 Ramp
- 12AB County Corner
- 13 Gallagher Bench
- 14 Sharks Teeth
- 15 Hurdle
- 16AB Hot Shot Combination
- 17ABC Wandin Which Way
- 18 Carlton and United Bar
- 19 Land Rover Slide
- 20 Quarry
- 21 Maxi Cube Fan
- 22 Prospectors Key Hole
- 23ABC Equinade Sunken Road
- 24 Oxer
- 25ABC Land Rover Lake
- 26 Sluice Gate
- 27 Domain Chandon Bottle
- 28 Garden Mound
- 29 Discovery Arch

INTERMEDIATE

- 1 Good Year Arch
- 2 Streets Pedestrian Crossing
- 3 Bega Cheese Factory
- 4ABC Equimec Stockman's Hut
- 5AB Range Rover Bank
- 6 Oxer Massif
- 7 Helsinki Steps
- 8 Wood Mill
- 9AB Lake Jetty
- 10AB County Corner
- 11 Gallagher Bench
- 12 Shark's Teeth
- 13 Hurdle
- 14ABC Hot Shot Bounce
- 15 Wandin Which Way
- 16 Carlton and United Bar
- 17 Land Rover Slide
- 18 Quarry
- 19 Maxi Cube Fan
- 20 Prospector's Camp
- 21AB Fallen Tree
- 22 Land Rover Lake
- 23 Land Rover Lake
- 24 Stone Wall
- 25 Garden Mound
- 26 Discovery Arch

NOVICE/JUN. NOV.

- 1 Good Year Arch
- 2 Water Trough
- 3 Oxer
- 4AB Equimec Stockman's Hut
- 5ABC Range Rover Bank
- 6 Range Rover Bank
- 7AB Bridge Crossing
- 8 Triple Bar
- 9 Planter Box
- 10 Stile
- 11AB Hunter's Brush
- 12AB Hot Shot Bounce
- 13AB Wandin Which Way
- 14 Picnic Ground
- 15 Quarry Step
- 16 Quarry
- 17 Maxi Cube Fan
- 18 Great Wandin Gold Mine
- 19ABCD Equinade Sunken Road
- 20 Canoe Shed
- 21 Land Rover Lake
- 22 Cart Wheel Ditch
- 23 Sheep Feeder
- 24 Discovery Arch

PRE-NOVICE/JUN.

- 1 Good Year Arch
- 2 Steeplechase
- 3 Log Pile
- 4AB Equimec Stockman's Hut
- 5AB Parallel Bar
- 6 Bridge Crossing
- 7 Log
- 8 Country Seat
- 9ABC Rails and Ditch
- 10 The Hitch
- 11ABC Wandin Which Way
- 12 Quarry Step
- 13 Quarry
- 14 Loading Ramp
- 15 Great Wandin Gold Mine
- 16 Discovery Drop
- 17 Boat House
- 18 Land Rover Lake
- 19 Picnic Table
- 20 Garden Mound
- 21 Discovery Arch

ACKNOWLEDGEMENTS

The Wandin Park Horse Trials Committee gratefully express their thanks to John and Angela Anker for the use of their beautiful property "Wandin Park". The committee would like to thank all the people who have given their services without whom the event would not be possible.

* ULR MOTORS as major sponsor and for supplying great assistance

* Gery Bell and John Ayre for their personal effort

* 7-Eleven for sponsoring the Shetland Grand National.

* Lionel Wilson for providing plants

* Yarra Valley Harness Club

* Ernie Hicks, Jack Fraser for organising Pony Club Teams races

* Bill Penrose of K Trials for assistance with computerised scoring

* Consolidated Cleaning for cleaning services

* Melbourne Showjumping Club for additional showjumping equipment and their members for their support as judges and general assistance

* ROVER GROUP AUSTRALIA for sponsorship and assistance

* Saddle-Up for sponsoring the Young Equestrian Trophy

* Mr Max Wilson for drawing the plan of Cross Country Course

* Shire of Lyalvale for use of caravan

* Shirley's Nursery for providing plants and flowers

* Walking Stick Club for mowing gate and carpark

* K & S Waste for waste disposal equipment

ROSS ROAD

DARLING ROAD

HIGH TENSION POWER LINES

FOUR WHEEL DRIVE
TEST TRACK



HOT SHOT
BOUNCE
16 AB.
14 ABC
12 AB.

15 HURDLE

9 ABC
RAILS & DITCH

HUNTERS
BRUSH 11 AB

THE HITCH
10 AB

STILE 10

PLANTER

BAR 18

SLIDE 19

FAN 21

QUARRY

STEP 20

22 23

WANDIN
WHICH WAY
11 ABC 13 AB

17 ABC 15

PICNIC
GROUND 14

ADVANCED ---	LENGTH OF COURSE	3277 METRES
29 OBSTACLES	TIME FOR COURSE	5 MIN. 45 SECS.
BLUE MARKERS	TIME LIMIT	11 MIN. 30 SECS.
INTERMEDIATE -I-	LENGTH OF COURSE	3162 METRES
26 OBSTACLES	TIME FOR COURSE	5 MIN. 45 SECS.
GREEN MARKERS	TIME LIMIT	11 MIN. 30 SECS.
NOVICE ****	LENGTH OF COURSE	3018 METRES
24 OBSTACLES	TIME FOR COURSE	5 MIN. 45 SECS.
YELLOW MARKERS	TIME LIMIT	11 MIN. 30 SECS.
PRE-NOVICE ---	LENGTH OF COURSE	2750 METRES
21 OBSTACLES	TIME FOR COURSE	5 MIN. 30 SECS.
PINK MARKERS	TIME LIMIT	11 MINUTES

WANDIN PARK EVENT & COUNTRY OFFICIAL MAP NOVEMBER 1995

President: Mr Bob Adam 560 5896 (P)
Secretary: Mrs Pat Phillips (059) 64 8320
Country Fair Enquiries: Mrs Carol Taylor 739 5087

OFFICIALS

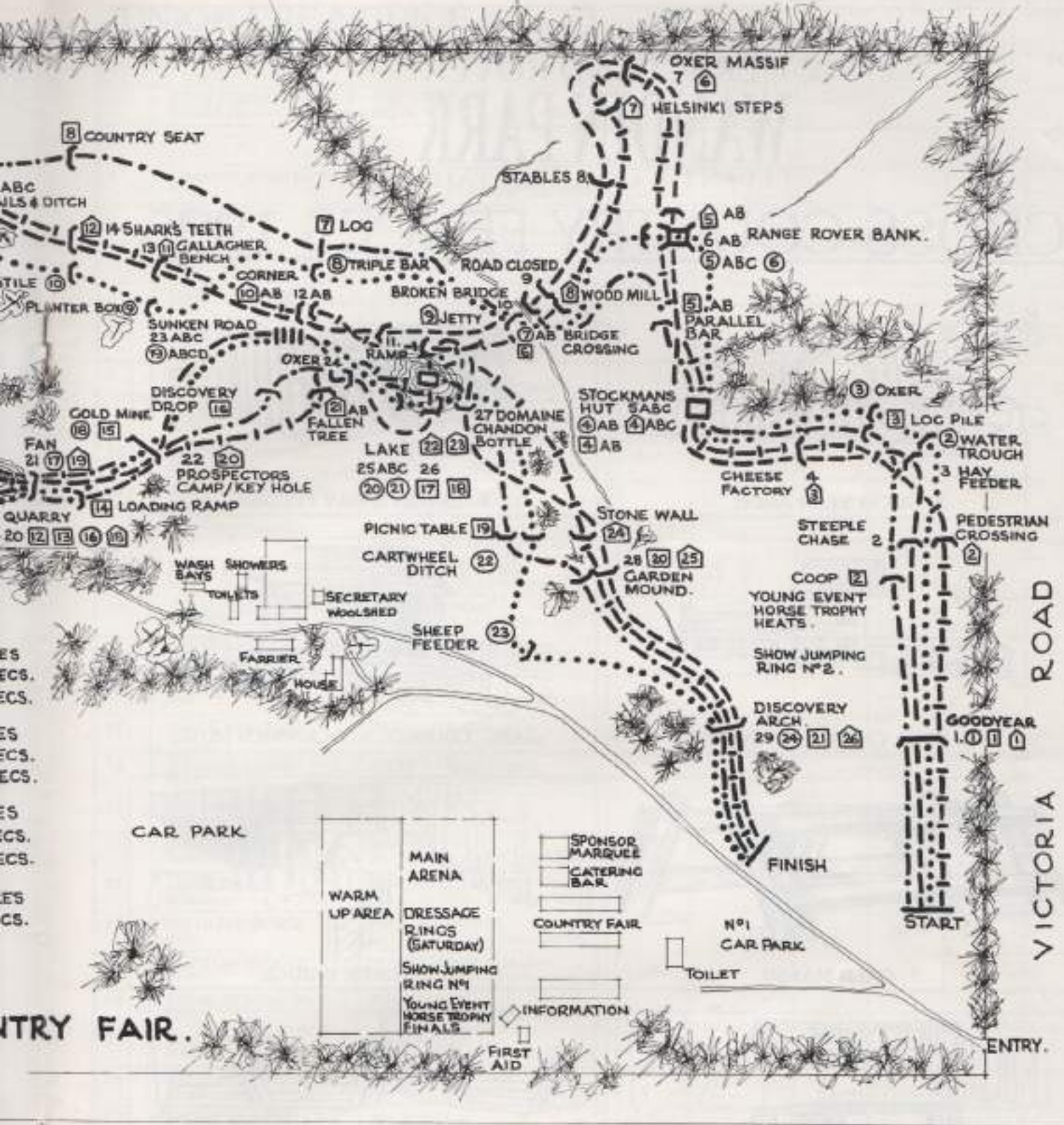
Hon. Organizer: Mr John Anker
EFA Technical Delegate: Mr Dean Blackman
Assistant: Mr Peter Wilson
Event Secretary: Mrs Pat Phillips
Entries Secretary: Mrs Helen Conway
Treasurer: Mr Phil Granchy
Country Fair: Mrs Carol Taylor
Gate and Parking: Mr George Mohren
Walking Stick Club: Mrs Angela Anker
Mrs Laith Fure-Mumish
Mrs Linda Verheyen
Mrs Mary Brown
Saddle Pony Club: Mr Russell Withers
Mrs Diana Foo
Mrs Laurel Prentice
Mr Barry Deacon

Illustrations: Medical Officers
First Aid
Farrier: Chief Scorer
Computer Scoring: Scorers
Commentators
Main Arena
Signage: Publicity
Ground Manager

Mr David Bailey
Mrs Diane Withers
Dr Laughlin McGregor
Dr Frederick Pelt
Mrs Marnie Conn
Red Cross
Mr Charles East
Mr Rob Wylie
Mr Bill Penrose
Mrs Brenda Barndale
Mrs Laurie Thompson
Mr Milton Collins
Ms Mary-Jane Crabtree
Mr Damon Kendrick
Mr Danny Wilson
Mr Russell Withers
Mrs Jill Sinclair
Mr Hugh Colby
Ms Anna Sharpley
Mr Graham Sweet
Mr Kevin Coleman
Terry Rilly

Jury of Appeal
Ground Jury
Communications
DRESSAGE
Co-ordinator
Gear Check
Marshals
Judges - Advanced
Intermediate
Novice

Peter Burgi
Capt. Mark Phillips
Mr Peter Davidson
Mr John Anker
Mrs Jan Coldough (President)
Ms Clare Lewis
Mr Neil Clinton
Mr Robert Daly
Mrs Wendy Rowland
Mrs Mary England
Mrs Caroline Coffey
Miss Jill Meyer
Ms Megan Lockhart
Ms Monica Cook
Ms Jan Coldough
Ms Gillian Hanford
Mrs Bunty Elder
Mr Edward Rodgers
Dr. Helen Davies
Ms Anthea Cooper
Ms Genevieve England



COUNTRY FAIR.

VICTORIA ROAD

ENTRY.

Jnr. Novice	Ms Elizabeth Britton Mrs Frankie Matthews Mrs Lee Bray	Jnr. Pre-Novice	Ms Linda McLeod Mrs Heather Redman Mrs Margaret Cant Mrs Judith D'Alaisio Ms Sandra Rosenbrock Mr Richard Thirkell	Pre-Novice	
CROSS COUNTRY					
Controller	Mr Geoff Sinclair	Chief Steward	Mr Neil Clifton	Assistant Steward	Ms Clare Lewin
Course Designer	Capt. Mark Phillips	Course Builders	Mr Tony Peers-Johnson Mr Frank Fitzgerald Mr Max Rouget Mr George Moheren Mr Chris Smith Mr Bob Adams Mr Jack Fraser		
Judge Co-Ordinator					
	Ms Wendy Robinson Ms Jackie Pawley Mr Allister Lawless Ms Leanne Turner Ms Claire Dawson Ms Sheila Naim Ms Nancy King Ms Janet McKenzie Mrs M. Powley Mr Nathan Britt Mr Noel Thompson Mr Dudley Proudfoot Ms Sue Crute Ms Maria Gessenhoven Mr Gary Alday Mr Dick Cox Mr Lyn Brown Mr Don Williams Mr Ron Yates Ms Jan Gallagher Ms Emma Noonan	Fence Judges	Mr Noel Thompson Mr Robin Johnson Ms Pat Blyth Mr Barry Kinser Mr John Barade Mr Peter Hagen Mr & Mrs George Mr John Craig Mr Ron Luomone Ms Julie Hanson Ms Louise Appleyard Ms Jan Irvine Ms Debbie Turnbull Mrs Robin Allday Mr David Baird Ms Marilyn Graves Ms Rebecca Foltyn Mrs Joyce Williams Ms Cheryl Cook Mr Bob Kneel Mr Richard Collins		
	Ms Veronica Harris Mr Trevor Cowley Mr Bob Bevan & Mrs H Bevan Ms Tracy Peritt Ms Elizabeth Deever Mrs Annette Appleyard Mr Geoff Scott-Smith	Starter Finisher Gear Check			
	Ms Veronica Harris	Mobile Judge			
	SHOWJUMPING				
	Designer & Builder - Ring No.1				Mr John Valencia
	Designer & Builder - Ring No.2				Mr David Sheppard
	Judges				
	Ms Andri Parker				
	Mr George Vukovich				
	Ms Kay Vukovich				
	Ms Bob Jannion				
	Ms Sue Jennion				
	Ms Meredith Ashton				
	Showjumping equipment courtesy of the Melbourne Showjumping Club.				
	YOUNG EVENT HORSE				
	Judges				
	Movement in Hand				Ms Anna Herman
	Dressage				Mr Brian Schrapel
	Showing of Paces				Ms Sharon Howatt
	Jumping				Ms Lucinda Green

ULR ♦ LAND ROVER
WANDIN PARK
 EVENT & COUNTRY FAIR

CROSS COUNTRY FENCES 1995



1. GOOD YEAR ARCH



3. STREET'S HAY FEEDER



4. BEGA CHEESE FACTORY



5ABC. EQUIMEC STOCKMAN'S HUT



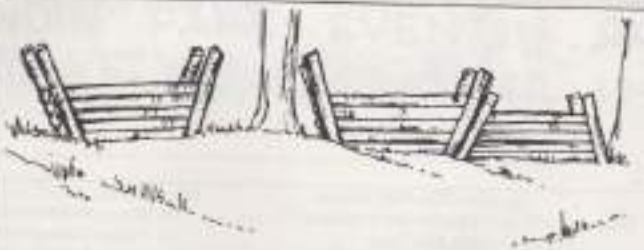
7. OXER MASSIF



10. BROKEN BRIDGE



18. CARLTON & UNITED BAR



21. MAXI CUBE FAN

22. PROSPECTOR'S
KEY HOLE



25ABC. LAND ROVER LAKE

JUNIOR PRE NOVICE Section 1

DRESSAGE: Ring 6 Sat. 8.00am X COUNTRY: Sat. 12noon
SHOWJUMPING: Ring 2 Sat. 2.30pm

NO.	NAME & OWNER	HORSE & BREEDING	DRESS.	SHOWJUMP	CROSS COUNTRY JUMP	TIME	TOTAL	PLACE
1	FLEUR CHRISTOPHERSEN S.Christophersen	BAY LADY Bay M. 15.3h 12yrs S:Mandana						
2								
3	CHANTEL CHETKETT Rider	GRIFF Blk/Brn G. 15.3h 6yrs S:Racing is Fun						
4	EMILY ANKER Rider	IF Grey M.16.1h 6yrs S:Pride of Kellena						
5	ERIN HANDS Rider	MARKET STAR Ch.G. 16h 9yrs S:						
6	PAUL WALKLING Rider	HAMMY'S TURN Brn. G. 16.1h 13yrs S:Nature Turn(USA)						
7	TARA KEARNEY Rider	RIPPLING WATERS Bay G.16.3h 7yrs S:Vivlicent						
8	RYAN SCHELFHOUT Rider	BARELY THERE Bay G.15.3h 10yrs S:Cindy's Son						
9	PRUE WOOD Rider	SONYA Ch.M.15.3h 13yrs S:Balmoral Boy						
10	MATTHEW LAURIE Rider	HOT TODDY II Ch.G.16.2h 12yrs S:Mendip Man						
11	FELICITY THOMSON Nigel Thomson	EL RADA Ch.G.15h 16yrs S:Ed Rada						
12	LUCY MACKENZIE Rider	MIAMI VICE Bay G. 15.3h 14yrs S:My Cue						
13	LINDA WILLIAMS Rider	PLAYING WITH FIRE Ch.G.16.2h 10yrs S:Zegna						
14	SARAH ELLIS Rider	TRIPLE STRIKE Bay G. 16.2h 16yrs S:Rangong						
15	HOLLY LEWIS Rider	SNOWY RIVER MANDELLA Bay G.16.3h 7yrs S:Just About						
16	AVERYLL SPINKS Rider	AFRICAN BAY Dk.Brn G.16.1h 11yrs S:Bold Flip						
17	PAULA BALCHIN Rider	BRIGADIER GERARD Grey G. 16.1h 6yrs S:Trisk						
18	ROWENA LEWIS Rider	FLEET STREET FLYER Grey G.16.1h 10yrs S:Silver Knight(NZ)						
19	QONA KNAGGS Rider	LATVIAN BOY Ch.G.16h 6yrs S:Tristar						
20	WILL HUME K.Jelbart	WOOLLY FOOT Bay G.16.3h 10yrs S:Unknown						
21	LIAM COGLIN Rider	SOUTHVALE SAMMI L.Ch.G.14.3h 9yrs S:Hillview Christo Lad						
22	MICHELLE BURGI Rider	ZUCCHETTO (NZ) Ch.G.16.1h 8yrs S:Zamataan(FR)						
23	CLINTON HEDGER Rider	DEMUR MOOR SHADOW Ch.G.15.2h 8yrs S:Lynedale Remolil						
24	TESSE FERGUSON Rider	PENDRAGON Dk.Bay G.15.2h 6yrs S:Racing is Fun(USA)						
25	SCOTT LAPPEN Rider	MARMALADE Ch.G.16.2h 8yrs S:Golden Orange						
26	KYLIE REID Meagan Kasek	CENTURY'S NAME Bay G. 16.3h 9yrs S:Family of Man						
27	EBONY TUCKER Rider	ANGFORD Bay G.15.1h 11yrs S:						



Wandin Riding Academy

Quayle Road, Wandin North, Vic. 3139 Ph: (059) 644 613

'Tooroonga' and 'Wandin Park'

Agistment, Lessons, Training and Saddlery

Lessons - Beginner to Advanced for children and adults

Agistment - Private paddocks to agistment at Wandin Park.

Ideal for retired or resting horses.

JUNIOR PRE NOVICE Section 2

DRESSAGE: Ring 4 Sat. 8.00am X COUNTRY: Sat. 12.41pm
SHOWJUMPING: Ring 2 Sat. 3.20pm

NO.	NAME & OWNER	HORSE & BREEDING	DRESS.	SHOWJUMP	CROSS COUNTRY JUMP	COUNTRY TIME	TOTAL	PLACE
31	EMMA MORTON-PURCELL Rider	BLUE NORSCA Grey G.16h 14yrs S:Swift Ghost						
32	ELIZABETH O'DOHERTY Rider	MR PECKSNIFF Bm.M.16h 13 yrs S:Glen Kahn						
33	TIM RICHARDSON NSW Rider	LENTARA PARDON ME Bm. G. 16h 13 yrs S:Comet (GB)						
34	JESSICA DRAUDE R.Brown	BOLD REGENT Ch.G.16.1h 12yrs S:Sovereignty						
35	JO-ANNE BARNETT Rider	OUR SPYDER Bay G.16.2h 12yrs S:Royal Prince						
36	KIRSTY ADAMSON Tracey Neal	TAIROUGE Bay G.16.2h 14yrs S:Taipan II						
37	REBECCA LAWRENCE Hugh Darvall	TOLEDO LAD Ch.G.16.2h 12yrs S:Aqua Sport						
38	INGRID KIMPTON C & I Kimpton	BLACK ANT Blk. M. 16.1h 7yrs S:Arama (NZ)						
39	FIONNAH RITCHIE NSW Rider	PINBALL WIZARD Ch.G.16.1h 15yrs S:Red on Red						
40	ROBYN MCFEE Rider	WIZARD B.Bm G.16.3h 12yrs S:Soverien Slipper						
41	BROOKE PROUDFOOT Rider	TARRY A WHILE Ch. F. 15.2h 14yrs S:Targo						
42	SARAH WICKS NSW Belinda Jackson	SIAM HERR Blk.G.17h 8yrs S:Dornherr						
43	STEPHANIE POTT Rider	WOODMOUNT RONAKATO Ch.G.16.2h 9yrs S:Sonakato						
44	MEGAN BARCLAY Rider	SHAZZAR Ch. G. 15.2h 16yrs S:Unknown						
45	MOIRA CULLEN Rider	POT BLACK Blk.G.16h 11yrs S:Countra Jan						
46	SALLY CONNELL Rider	ACHIEVE Bay G.16.2h 15yrs S:Recovered						
47	MICHELLE WILLIAMS Rider	DARK ANGEL Bm. M. 14.3h 10yrs						
48	ALEX GALLAGHER Rider	BLACK SAMBUCCA Blk.G.16h 7yrs S:Pagasa						
49	SHEY WEBBER Brent Webber	STREET KID Ch.G.16.2h 12yrs S:Swift Ho						
50	ERIN HANDS Rider	NEGATIVE BLAZE Grey G. 15.3h 8yrs S:Navahoe Bird						
51	DAVID STEPHENS Rider	STATE OF MIND Bay G.17h 15yrs S:Sizzlin Trim(Imp)						
52	CAROLINE CASTLE SA Rider	PAYDAY'S PAMPAS Pal.G.15.3h 12yrs S:Apache Payday						
53	MICHAEL AXARLIS Rider	HAWKINS Dk.Bm G. 15.3h 7yrs S:Unknown						
54	JAIMIE REYNOLDS Rider	BILLY Ch.G. 16.1h 12 yrs S:Gondolier						
55	EMILY ANKER Rider	MIGHTY MOPP Blk.G.16.2h 7yrs S:Mr Jimmy Mopp						
56	CINDY MORRISON Allan Morrison	THEODORE Bm.G.16h 12yrs S:Silver Lad						
57	RYAN SCHELFHOUT Rider	SWEET CHARLOTTE Pal.M.15.2h 7yrs S:Dillon						
58	KATE WALLIS Rider	ROYAL COMMISSIONER Blk G.16.2h 13yrs S:Nullahfield						

PRE NOVICE Section 3

DRESSAGE: Ring 1 Sat. 8.00am X COUNTRY: Sat. 1.23pm
SHOWJUMPING: Ring 2 Sat. 4.10pm

NO.	NAME & OWNER	HORSE & BREEDING	DRESS.	SHOWJUMP	CROSS COUNTRY JUMP	COUNTRY TIME	TOTAL	PLACE
61	RUSSELL WILSON Rider	TUCKONI Ch. G. 17h 15yrs S:Wusu						
62	LEE NORRIS Rider	THE SCOOT Bay G. 16h 10yrs S:Rising Flame						
63	ROBERT HUTCHESON SA R & A Hutcheson	ADELAIDE SYMPHONY Ch.G.15.3h 6yrs S:Brondesbury(RE)						
64	SUSAN RICHMOND Rider	WEAVER'S TALE Bay G.17h 7yrs S:Handy Prower						
65	ROSANNE LATROBE Rider	SIR TALLIMBA Grey G. 15.2h 10yrs S:Clever Coup						
66	PAUL DARLEY Mrs O. Darley	ROLEX Bay G.16.3h 9yrs S:Burglar						
67	MIKE NICHOLLS Rider	GENDER ISSUE Ch. M. 15.3h 7yrs S:Scruples						
68	SALLY HOWE Rider	SHANOAH Bay G.16h 7yrs S:Young Runaway						
69	KATE FARRELL Jan Mouser	WATERMARK Bay G.17.1h 7yrs S:Kiltoghert Casey						
70	KATHY MAC MAHON Rider	QUALITY ROCK Ch. M. 17h 8yrs S:Zegna						
71	JOANNA DIPNALL Rider	PAKAMASS SHACKLE Bm G. 15.3h 10yrs S:Comara Tic Tac						
72	DANIELLE MC ALLISTER Rider	TOP NOTCH Grey G. 16h 7yrs S:Old Spice						
73	SIMONE KANN NSW Rider	BALMORAL SAAB Blk.G.16.2h 6yrs S:Regal Advice						
74	DANIELLE MAYNE Rider	RESOLUTELY Bay G. 16.1h 10 yrs S:Some Lute						
75	AMANDA DAWE Rider	OSKI BROWN Bay G. 16.1h 8yrs S:Unknown						
76	WAYNE KIELY WA Rider	STACK IT HIGH Grey G. 16.1h 7yrs S:One Pound String						
77	JANELLE MILLER TAS Rider	BOLLE Bay G.17h 11 yrs S:Bemboka Yacht						
78	SUE MOSES Rider	WILLIS Grey G.16.1h 11yrs S:Exalt						
79	JANET JACKSON Rider	THUNDERING DECK Bay G. 16.2h 12yrs S:Thundering Jet						
80	NICK MCCLELLAND Rider	TOP OF THE STARS Bay G.16.2h 10 yrs S:Top Post						
81	OOPY KIMPTON Rider	STREET TALK Ch.G. 16.1h 6yrs S:Pride of Place						
82	IMTIAZ ANEES INDIA Rachel Krause	ALGABATO D.Bay G. 16.1h 12yrs S:						
83	ADRIAN BRIGHT Rider	PASTICHE Bay M.16h 8yrs S:Aspect						
84	INGRID HERNANDEZ PH							
85	LIANA KEARNEY Rider	GUMBY Bm M. 16.2h 8yrs S:						
86	PAGAN DAVIES Rider	DOUBLE BASS Ch.G.15.3h 6yrs S:Topiary						
87	STEVE JUZVG Reenor Priest	GLENGOOD BOY Grey G. 16h 13yrs S:Good & True						
88	DAVID MIDDLETON Rider	ANOTHER APOLLO Bm G.16.3h 10yrs S:						
89	IAN BATTY Rider	SNOWGUM JACK Grey G. 16.2h 8yrs S:John's Hope						

PRE NOVICE Section 4

DRESSAGE: Ring 2 Sat. 8.00am X COUNTRY: Sat. 2.07pm
SHOWJUMPING: Ring 2 Sat. 12.30pm

NO.	NAME & OWNER	HORSE & BREEDING	DRESS.	SHOWJUMP	CROSS JUMP	COUNTRY TIME	TOTAL	PLACE
91	FIONA TELFORD Rider	JUST DOING TIME Ch.G.16.3h 10yrs S:Noble Hour						
92	LOREN KINNA Rider	TATTENHAM MINK Bm. G. 16h 6yrs S:Tattenham						
93	ELIZABETH MULHOLLAND Kelly Miller	DOUBLE TIME Bay M.15.3 7yrs S:Hula Chief						
94	MEGAN JONES SA Craig Smith	BLACK REGIMENT Blk.G.15.3h 8yrs S:Regimental Honour						
95	JAYNE COX Rider	ROYAL QUAY Bay G. 16.2h 10yrs S:Harbour Prince						
96	NATALIE LEES Rider	ROMANY RYE Bay G. 16.3h 12yrs S:						
97	HELEN HICKS NSW Rider	FOXGROUND HINNEMAN Leop.App.G.16.1h 5yrs S:Mr Jimmy Mop						
98	ANNETTE REILLY Rider	KARUMBA BENGALA Bay M. 15.2h 10yrs S:Rahvon Traveller						
99	LUCY BENNETT TAS Rider	VENTURER Ch.G.16h 9yrs S:Taj Rossi						
100	VANDA MORGAN Rider	STARWAY Bay G.15.3h 6yrs S:Starway						
101	ROZ MORRISON Zara Brookes NSW	KID CAPONE Ch.G.16.1 7yrs S:No Alcoholic						
102	SUSAN RICHMOND Rider	STAR SYMPHONY Bay M.16h 6yrs S:Quabeau						
103	DANIELLE FARLEY Rider	HAZELMERE LEONARDO Bm G. 16.3h 12yrs S:Horteland VII						
104	JENNY WILSON Anne Smith	SUNBRY LODGE DUSK Grey M.16.2h 7yrs S:						
105	SOPHIE RITCHIE Rider	MIDDLETON Grey M.15.3h 10yrs S:Middleton Sam						
106	MELISSA DEY Philippa Davison	DABYMINGA COROMANDEL Bay G.15.2h 10yrs S:Grenada(IMP)						
107	SALLY AVERY Rider	MANHATTAN II Bm. G. 16.2h 5yrs S:Just Us						
108	ALLISON GILLESPIE NZ Liz Nicholson	O'FLAHERTY Bm. G.16.2h 16yrs S:Ork						
109	LAURA DARVALL Rider	HOUSTON ROAD Bay G.16.1h 8yrs						
110	SUSAN RICHARDS Rider	BRUKENAM Bay G.16.2h						
111	TRACEY JONES NSW Rider	MELODY Grey M.17h 10yrs S:Lime Headline(IMP)						
112	WARREN LAMPERD W & C Lamperd	BRANIGAN'S DR HOPKINS Grey G. 17.1h 6yrs S:Branigans Pride						
113	FIONA LOVICK Rider	CABARET LASS M.15.2h 9yrs S:Unknown						
114	ANTOINETTE LEVISTE P							
115	AMANDA JOHNSTON Rider	MAC'S IDOL Bay M.16.1h 9yrs S:Captain Stardust						
116	KERRY BUCKLAND Rider	ON THE EDGE Bay G.16.2h 7yrs S:Unknown						
117	LISA RETFORD D.Rose	EQUEST.BISMARCK Bay G.16.3h 14yrs S:Fremder(IMP)						
118	HUSREF MALIK (MAL) G.Rolton/D.Goulding	DISCLOSURE Blk.G.16.1h 7yrs S:Half loed						
119	ANNETTE WALLS Rider	BELLBROOK MCCORY Grey G.17h 7yrs S:Asgard McTavish						

PRE NOVICE Section 5

DRESSAGE: Ring 5 Sat. 8.00am X COUNTRY: Sat. 2.49pm
SHOWJUMPING: Ring 2 Sat. 1.20pm

NO.	NAME & OWNER	HORSE & BREEDING	DRESS.	SHOWJUMP	CROSS COUNTRY JUMP	TIME	TOTAL	PLACE
121	SONIA BIESBROEK Rider	SADDLE UP THE GREY Grey G.16.3h 11yrs S:						
122	MELISSA GUEST Rider	SHOSHONE PARK TSWANA Bay G.16.1h 10yrs S:Hiking						
123	PIP WHITE Rider	BARNACLE BILL Grey G.16h 8yrs S:Steipner						
124	JOANNA WILSON Louise Wilson	JACK SHARIFF Bay G.16.1h 10yrs S:Shariff						
125	HEIDE TALBOT TAS Rider	JANTZ Ch.G.16.2h 9yrs S:Northern Renard						
126	JAMES SCANLON Rider	PANGUNA Brn.G.17h 8yrs S:Copper King						
127	MURRAY LAMPERD Rider	KILOWATT Brn.G.16.1h 6yrs S:Consolidate						
128	JESSICA STANLEY Rider	IMPERIAL TEMPTATION Bay G. 15h 10yrs S:Unknown						
129	MARIELLA VIVATA PH							
130	TONY BLANCHARD Rider	MR DREAM WEAVER Bay G.16.1h 8yrs S:Flooding						
131	ROBYN DARLEY Mrs O.Darley	STROLL ALONG Bay G.15.3h 8yrs S:Sonakato						
132	ROZ TATTON SA Rider	GRAINGER Brn.G.17h 8yrs S:Match Winner						
133	ANNE GREENWOOD Rider	FAIR CHARGER Bay G. 16.2h 17yrs S:Noble Charger						
134	ALISON IRWIN ACT Rider	DEADSET LEGEND Grey G 16.2 9yrs S:Zadkine						
135	KIM WRIGHT-SMITH Rider	ALLANBRIDGE HAPPY Bay G.16.1h 8yrs S:Cool Ted						
136	LYLE MCKECHNIE SA Rider	ULTRASONIC Bay G.16.2h 7yrs S:Kildare Pride						
137	LEA REID Rider	JAGUAR Black G.16.2.5h 7yrs S:Consolidate						
138	VITTORIO BARBA PH							
139	KELLY GALEA Rider	MR HECTOR Bay G. 16.3h, 6yrs S:						
140	CHARLES HATCHER Rider	BUSTER Bay G. 16.1h 8yrs S: Kennart						
141	JENNY WALL L.LePlastriere/Rider	STORMY WEATHER Ch.G.16.2h 9yrs S:Otehi Bay						
142	ROBERT GOODWIN Rider	EDGE OF A DREAM Brn. G.15.3 6yrs S:Trevaray						
143	LIANE SHANNON Rider	COLLIER BAY Brn.G.15.2h 5yrs S:Top Avenger						
144	TRACY WOODS Rider	BENTLEY Ch. G. 16.1h 13yrs S:Vain King						
145	HENRY HICKS NSW Rider	WENDELA JACKAMIN Bay G.15.2h 5yrs S:Sir Dapper						
146	Mary Rose Simmons	SHINING STAR Bay G.16.1h 7yrs S:Fralo						
147	NAOMI DOWLING G.Naughton	RHYTHMIC CHALLENGE Brn.G.15.2h 8yrs S:Crazy Rhythm						
148	VIVIEN GRANT Rider	PRINCE REGENT Ch. G. 16.1h 12yrs S:Sovereignty						

A U S T R A L I A N

HORSE & RIDER

MONTHLY MAGAZINE & *YEAR BOOK.*

Is proud to support the

Wandin Park ODE

We wish all competitors the best of luck.

JUNIOR NOVICE Section 7DRESSAGE: Ring 5 Sat. 2.00pm X COUNTRY: Sun. 10am
SHOWJUMPING: Ring 2 Sun. 12.30pm

NO.	NAME & OWNER	HORSE & BREEDING	DRESS.	SHOWJUMP	CROSS COUNTRY JUMP	COUNTRY TIME	TOTAL	PLACE
151	JENNIFER SMITH Rider	MR CROMWELL Bay G.16.2h 9yrs S.Mr Consistency						
152	OLIVIA BUNN Peter Bunn	GV DISTANZE Ch.G.17h 8yrs S.Disteflink						
153	CHRIS JONES Rider	CLAUDIUS Bay G. 16.2h 14yrs S:How Fast						
154	EMILY ANKER Rider	STOLEN SUCCESS Blk G.16.2h 7yrs S:War Chest						
155	HAYLEY GILBERT Rider	"OVERLEY" DEBONAIR Gr/Wh.G.15.3h 12yrs S:Bonnie View S.Mist						
156	REBECCA KASPEROVIC Rider	TUELLER BENCH Bay/Brn. G. 15.2h 13yrs S:Tuellenama						
157	OLIVIA DAWSON-GROVE Rider	LUSATIA PARK REX Bay G.15.1h 15yrs S:FECHTOR						
158	KATE WALLIS Chris Wallis	HELENA Grey M.16.3h 13yrs S:Suiza						
159	CINDY MORRISON Mrs Yvonne Morrison	CENTENARY Brn.G.16.2 Aged S:Swift Ghost						
160	FINLEY MCDONALD Rider	ANGLO ACHIEVE Bay G.16h 16yrs S:Nicolo						
161	PETER DALY NSW Rider	PLUTONIUM ORE Ch.G.15.3h8yrs S:Saturn Ring						
162	TARA KEARNEY Rider	RISEING STAR Bay G.15.3h 11yrs S:Unknown						
163	MICHELLE WILDE Rider	CAPTAIN JACK Brn.G.16.2h 16yrs S:Valuta(NZ)						
164	OLIVIA BUNN Peter Bunn	GV PONTOON Ch.G.16.3h 8yrs S:						
165	EMMA CASSAR K.Lang	QUALITY MEMORIES Ch.G.15.3h 13yrs S:Four Trice						
166	EMILY ANKER Rider	VENETIAN WALTZ Blk/Bay G.16h 9yrs S:Musical Phantasy						

Seville Garden Supplies

SEVILLE SAND, SOIL & SCREENINGS
SEVILLE MINI MIX
DOMESTIC WATER SUPPLIES

*Ken & Kath Reed***One Stop Garden Shop**

Melway 119 J11

(059) 64 4598

Wandin Valley Fruit and Vegetables

QUALITY AND FRESHNESS OUR PRIORITY

We guarantee the best quality fruit and vegetables available.

Old Fashioned friendly service.

Pop in, have a chat

Judy & Terry Elliott
PROPRIETORS386 Warburton Hwy
Wandin Nth. 3139INDOOR PLANTS
AND
SEEDLINGS

NOVICE Section 8

DRESSAGE: Ring 1 Sat. 12.00noon X COUNTRY: Sun. 10.22am
SHOWJUMPING: Ring 2 Sun. 1.00pm

NO.	NAME & OWNER	HORSE & BREEDING	DRESS.	SHOWJUMP	CROSS COUNTRY JUMP	COUNTRY TIME	TOTAL	PLACE
171	JUSTINE SEYMOUR Rider	CANDLESTICK JACK Grey G.16.2h 8yrs S:Go Show Go						
172	AMANDA ROSS Ms Anne Smith	KIBAH MINK Grey M.16h 9yrs S:						
173	JOHN BIRD Rebecca Hurrey	MISTER PICKPOCKET Bay G.16.1h 13yrs S:Shiftman(NZ)						
174	MICHAEL BAKER Peter Bunn	GV IMAGINE Grey G.17h 7yrs S:Unknown						
175	NARELLE HOGG NSW Rider	LENTARA HOT GOSSIP Br G.16.3h 8yrs S:Warrington (IRE)						
176	SUE JOHNSTON Rider	HOBY Bay G.17h 10yrs S:Noble Car						
177	OOPY KIMPTON K & W Alstergren	BONDED Ch.G.16h 11yrs S:Starway						
178	MELANIE WENKER Rider	HACKETT MAN Bay G.16.1h 9yrs S:Ho Hackett						
179	ANDREW MCLEAN Rider	WOODMOUNT ORBIT Ch.G.16.1h 6yrs S:Tonto						
180	IAN BALFOUR I & L Balfour	THE KING'S GEM Ch.G.16h 7yrs S:Harbor Prince(USA)						
181	TONY WILLIAMS Rider	CHILLAWACK Ch.G.16h 10yrs S:Mandingo						
182	ANDREW HOY NSW Anita Jackson Tas	MR SOTHERBY B. H. 16.2.5H 10yrs S:Bold Mayo						
183	ANNA PUTKER A & A Putker	WELTEVREDEN SPUR ON Br/Bk. G.16.1h 6yrs S:Star Pyramid						
184	PHILIPPA DAVISON Rider	CALANDA Bay G.16.2h 8yrs S:Granada(IMP)						
185	LEESA MARTIN Rider	IARMA BOY Bm G. 16.2 10yrs S:Estaminet						
186	ALEX MATHESON NZ Marcus OldhamCollege	MURPHY Grey G. 16.1h 9yrs S:Boone's Flight						
187	NATALIE KICHAKOV Rider	SWIFT GHOST Bay G.17h 11yrs S:Swift Ghost						
188	CHREE KEARNEY Rider	BOLLE Ch. G. 17h 7yrs S:Anyone Home						
189	ROBERT HUTCHESON SA B & J HEINE USA	RAIN Ch.G.16.2h 11yrs S:Rainbow's First						
190	BRENT WEBBER Rider	TARRALEE FLEET STREET Bay G.16.2h 10yrs S:Unknown						
191	MEGAN JONES SA Sadie Mitchell	MANY MORE Ch.G.16.1h 11yrs S:Marque Star						
192	STEVEN GIBBONS Rider	SCARBOROUGH Grey G. 15h 17yrs S:Adleston						
193	NICK KIRK TAS Rider	MR BIGGLES Bay G.16.2h 9yrs S:Unknown						
194	DEBBIE ROSS Rider	GPH STUDEBAKER Ch.G.15.3h 11yrs S:Noble Car(USA)						
195	JAYNE COX Rider	BALLROOM BLITZ Bay G.16h 7yrs S:Archregent						
196	REBEL MORROW QLD R & V MORROW	OAKLEA HUDSON HAWKE Br.G.16.1h 6yrs S:Harold of Hastings						
197	EMMA NOONAN Rider	TAKE TIME Bay G.15.3 12yrs S:Ashabi(NZ)						
198	PIP WHITE Rider	TOORAK Bay G. 16.3h 9yrs						
199	HUNTER DOUGHTY NSW Rider	ON GOOD TERMS Grey G.16.2h 9yrs S:Noble Ambition						
200	KATE FARRELL Marg. Farrell	RAFFLES Ch.G.16.2h 7yrs S:Christoffe						
201	JANELLE BEAN Rider	LUCIFER'S LEAP Bay G.16h 7yrs S:Salmon Leap						
202	JENI MC LAUGHLIN Rider	PAERI Bay M.16.3h 10yrs S:Captain Piper						

NOVICE Section 9

DRESSAGE: Ring 5 Sat. 12noon X COUNTRY: Sun. 11.09am
SHOWJUMPING: Ring 2 Sun. 2.00pm

NO.	NAME & OWNER	HORSE & BREEDING	DRESS.	SHOWJUMP	CROSS JUMP	COUNTRY TIME	TOTAL	PLACE
206	SUE LESLIE Rider	HOLLOW SOUND Brn G.16.3h 11yrs S:Sir Echo						
207	JODI BACON Rider	GLENWOOD POYTELLO Ch.G.16.3h 12 yrs S:Se Poy						
208	REBECCA CLARK Rider	DELZAM (NZ) Ch.G.15.2h 9yrs S:Zamazaan(FR)						
209	JONATHAN MCLEAN Helen Matthews	PALMERSTON DUELL BACCARAT Bay G.17h 9yrs S:Duell Shutz						
210	CAROL SLADE Rider	JINDABYNE ROCK Bay G.16.3h 10yrs S-Rocket On						
211	NINA CLARKE Rider	LOCKMEISTER Bay G.17h 6yrs S:Doellschultz						
212	SHARON HOWELL Ms.S.Tipping/Rider	KILLARNEY CASTLE Bay G.16h 6yrs S:Mr Jazz						
213	MICHAEL CREBER Rider	BASIC INSTINCT Bay G.16.1h 10yrs S:Cobblers Cove						
214	BEV SHANDLEY Rider	STEADY EDDY Ch.G.16.2h 8yrs S:Rocket-On						
215	RACHEL WILLIAMS Rider	BLACKJACK Blk.G.16h 11yrs S:Terlines Solomon						
216	PENNIE O'DEA Rider	KISS AND TELL Brn.G.16h 8yrs S:Kissenger						
217	RUTH LINNANE Rider	SHORT SNORT Bay G.15.3h 8yrs S:Snort						
218	PETER MCGREGOR Amy Burke	PALADINS PHEONIX Ches G.17h 9yrs S:Supreme						
219	MELISSA MCGIBBON NSW Rider	RUDY VALENTINO BLK.G.16.1H 13YRS S:Loosen Up(USA)						
220	ROBERT HANNA Rider	HIGHTOWER Grey G.16.2h 7yrs S:Goy Habit						
221	LISA WADDELL Rider	SELF ADDRESSED Ch.G.16.2h 9yrs S:Palaban						
222	TRACEY NEAL Rider	RUBY TUESDAY Brn.M.16.2h 8yrs S:War Chest						
223	DOMINIC COOK Rider	EURIPIDES Ch.G.16.2h 13yrs S:						
224	WENDY WILLIAMS Rider	SIR WILKES Bay G.15h 12yrs S:Probusca						
225	DR DAVID RAMSEY SA Dr.W & Mrs M Ramsey	ROOBEN Ch.G.16.2h 8yrs S:Luck Roona						
226	NARELLE HOGG NSW Rider	LENTARA COOLAROO Br G.16.1h 6yrs S:Coonong						
227	BOB POWLES Rider	NORTHERN CADRE Brn G.16.3h 7yrs S:Northern Congress						
228	CRAIG CARMODY NSW Rider	LUPO SANTO Brn.G.17h 13yrs S:						
229	ELIZABETH MULHOLLAND Rider	WINDSONG TRAVELLIN'MAN Ch.G.16.1h 8yrs S:Elwanda Bay						
230	ANITA JACKSON TAS Nid Brown/A.Jackson	MCMURPHY Ch. G. 16.2h 10yrs S:Grave Son						
231	ROBERT HUTCHESON SA R & A Hutcheson	ALLEGRO CON MOTO App.G.16.2h 6yrs S:PPP Mr Jimmy Map						
232	IAN BALFOUR I & L Balfour	PATCH Grey G.17h 8yrs S:Read All About It						
233	ANDREW MCLEAN Rider	WOODMOUNT WARRIER Bay G.16.2h 7yrs S:Tonto						
234	MEGAN JONES SA Rider	KIRBY PARK JEROMY Ch.G.16.2h 9yrs S:Connoisseur						
235	SUE JOHNSTON Rider	ZAZARAC Ches G. 16h 13yrs S:Oh Hello						
236	LISA RETFORD Rider	EQUEST, CHEWBAKA Brn G.16.3h 6yrs S:King Parrot Big Foot						
237	TANYA DUNCAN Rider	MONTEGO GREY Grey, G. 15.3h 9yo S: Monsview Topaz						HC
238	ANDREW HOY NSW Richard Stanford	IRISH DRUM Bay, G. 17h 8yo S: Sir Tristram						



7-Eleven

Shetland Grand National 1995

Main Arena - Sunday

Heats - 1.20 & 1.40pm

Final - 2.25pm



INTERMEDIATE Section 10

DRESSAGE: Ring 3 Sat. 8.30am X COUNTRY: Sun. 12.30pm
SHOW/JUMPING: Ring 2 Sun. 3.00pm

NO.	NAME & OWNER	HORSE & BREEDING	DRESS.	SHOW/JUMP	CROSS JUMP	COUNTRY TIME	TOTAL	PLACE
241	MARNIE HAMERSLEY WA Rider	BEST TRADITION Bm. G. 16.3h 7yrs S:Balmoral Boy						
242	LYDIA LAWRENCE TAS Rider	ROLEX Ch.G. 16.1h 12yrs S:St.Braviells						
243	KIM SLAVIN Rider	MAGNAFORCE Bm. G. 16.3h 12 yrs S:Yeates						
244	SUE HOLINGER Rider	CARRAMAR DYLAN Ch.G.16h 8yrs S:Increase						
245	KAZUHIRO IWATANI JPN Trudi Yates	ZULU Bm G.17h 12yrs S:Eleazar						HC
246	ANDREA WILLIAMS NSW Rider	ATTORNEY GENERAL Ch. G. 16.1h 10yrs S:Crown Law			SCRATCHED			
247	YOSHIHIKO KOWATA JPN Equus Aust P/L	DILLINGER Bm.G.16.3h 7yrs S:Sumagr						
248	PHILIP CAFARELLA Rider	TRY Grey G.16.1h 16yrs S:Unknown						
249	NICHOLAS ROBERTS Rider	TOWN GOSSIP Bm G.16.1h 8yrs S:Imperial Prince						
250	JON HARRISON ACT Rider	HIRASSEM Ch.G.16h 12yrs S:Reassendyl						
251	GILLIAN ROLTON SA Rider	LIAISONS Ch.G.16.2h 8yrs S:Family Ties						
252	RHONDA MASON Rider	TROUBLE MAKER Bay G.16.3h 13yrs S:Consenting						
253	JAMES SCANLON Brooke Scanlon	RECKLESS MANNER Bay G.16.2h 14yrs S:Reckless						
254	MEGAN JONES SA Rider	KIRBY PARK JEOPARDY Bay M.16h 14yrs S:						
255	JENNY WILSON Rider	SO COURTEOUS Blk.G.16.1h 11yrs S:Court Clown						
256	BRIDGET CURRAN C.Davies & B.Curran	SAMURAI Bay G.16.1h 12yrs						
257	DEBRA ROLLASON Rider	JUST A DAZ Bay G.16.1h 11yrs S:Gental Jack						
258	ANGELA CALLANDER S & A Callander	IT'S HOLLYWOOD Bm.G.17h 7yrs S:Handy Proverb						
259	SALLY HOWE Rider	SHADOWFAX Bm.G.16h 10yrs S:Nicodare						
260	MURRAY LAMPERD Rider	PROPAGANDA Bay G.16.2h 7yrs S:Imperial Seal(GE)						
261	ANDREW HOY NSW I Haggerty/S Johnson	FOREMAN MATERIAL Bay G.16.3h 10yrs S:Assertive						
262	LUKE JONES SA Rider	BOOTLEGGER Bay G.16.2h 9yrs S:Preacher Plaudit						
263	KIM SLAVIN Rider	BIG BERTHA Grey M. 16.2h 7yrs S:Al Mundhir						
264	BRIAN SCHRAPEL B & D Schrapel	NORTHERN LIGHTS Bay G.17h 11yrs S:Valuta						
265	JUSTIN HOCKING J & A Hocking	MISS DE MEANA Ch.F.15.2h 9yrs S:Beau Chanter						
266	ROBYN BROWN Rider	LOVANTO Bay G.16.2h 7yrs S:Esperanto.						
267	GRAHAM MCVILLY TAS Rider	NEKA FELLA Dk.Bay G. 16h 14yrs S:Sydenham-Hawfloch						
268	JOHN BIRD Sonia Biesbroek	SADDLE UP A DREAM Blk G.16.1h 9yrs S:Bold Flip						
269	CHRISTOPHER SMITH Rider	RONALD BIGGS Bay G.16.2h 14yrs S:Polopadies						
270	PAUL VIGGERS Rider	THE JOLLY SWAGMAN Bay G.16.2h 8yrs S:Brondesbury						
271	AMANDA ROSS Rider	OTTO SCHUMAKER Bay G.16.2h 8yrs S:Dom Cimarosa						
272	LYDIA LAWRENCE TAS Rider	PURE GUINNESS Bm.G.15.3h 8yrs S:Lord Seymour						
273	MICHAEL BAKER Rider	GS VIENTA Grey G.16.1h 8yrs S:Rumour-oui						
274	PAUL DARLEY Robyn Darley	RED JARRA Ch.G.16.3h 10yrs S:Birdwood						
275	GILLIAN ROLTON SA Rider	PERSUASION Bay G.17.3h 11yrs S:Son of Speed						

ADVANCED Section 11

DRESSAGE: Ring 4 Sat. 1.00pm X COUNTRY: Sun. 2.40pm
 SHOWJUMPING: Sun. Main Arena 12noon

NO.	NAME & OWNER	HORSE & BREEDING	DRESS.	SHOWJUMP	CROSS JUMP	COUNTRY TIME	TOTAL	PLACE
276	ROSS SPALDING NSW Trudi Yates	SHOSHONE PARK TUSCARORA Ch.G.17h 13yrs S:Ngawyni						
277	SONYA JOHNSON WA Mrs D & S Johnson	PARKIARUP DISTANT THUNDER Grey G.16.1h 10yrs S:Amico Mia						
278	JENNY WALL V.Rosback	RECLANDS LIBERTY Ch.G.16.2h 12yrs S:Top Form						
279	VANDA MORGAN Rider	BALLYMOON CASTLE Bay G. 16.1h 16yrs S:Altai Khan						
280								
281	BILL CHRISANIS Joanne Malloy	HP JOINT DECISION Ch. G.16.2h 11yrs S:Wolverton						
282	BARRY ROYCROFT B & L Roycroft	SECRET SONG Ch.G.17h 10yrs S:						
283	MARK GRIFFITHS M & E Griffiths	MR WONG Bay G.16.2h 10yrs S:Unknown						
284	JOHN BIRD Rider	SERENDIPITY Grey G.16h 9yrs S:Glenison						
285	SHARON HOWELL Mrs F Stead/Rider	WALHALLA CASTLE D.Bay G.16.3h 7yrs S:De-Serieaux						
286	KATE FARRELL Del Ogilvy	JABBERWOCKY Brn.G.16h 15yrs S:Stirling King						
287	SONYA JOHNSON WA Mrs D & S Johnson	FLOATING DOLLAR Ch.G.15.3h 10yrs S:Captains Wings						
288	ROSS SPALDING NSW T.Turnbull/Rider	SPEEDY-A-GO-GO Ch.G.16.2h 7yrs S:Copper Kingdom(USA)						
289	REBEKAH FOSTER SA Rider	JESONAZ Ch.G.16.3h 16yrs S:The Godson						



REFRIGERATED, INSULATED AND DRY FREIGHT PANTECHNICS.

Proud to be a sponsor of the
Wandin Park Horse Trials 1995
Best wishes to all competitors

Head Office: 31 Hallam South Rd, Hallam, Vic. 3803 Ph: (03) 703 2822 Fax: (03) 703 1374

SEVEN SPORT SUPPORTS WANDIN



TROPHIES & PRIZEMONEY

	Advanced	Intermediate	Novice	Pre Novice	Junior Novice	Junior Pre Novice
1st	\$1,000 & Trophy	\$500	\$400	\$200	\$250	\$150
2nd	\$800	\$400	\$300	\$150	\$200	\$125
3rd	\$600	\$300	\$175	\$125	\$150	\$100
4th	\$400	\$200	\$125	\$100	\$100	\$80
5th	\$200	\$100	\$100	\$80	\$80	\$60
6th	\$100	\$80	\$75	\$60	\$60	\$40
7th	Rosette	Rosette	Rosette	Rosette	Rosette	Rosette
8th	Rosette	Rosette	Rosette	Rosette	Rosette	Rosette

- Winners of all classes receive a presentation rug.
- Rosettes presented to all placegetters to 8th place.
- We gratefully acknowledge the following companies who have sponsored prizes.

Buckskin Jodhpurs

Equinade

Georg Schumacher - Prestige Jodhpurs

Invincible Horse Bandages

Skye Park Rugs

SADDLE UP YOUNG EVENT HORSE

1st	\$250 & Trophy	4th	\$75
2nd	\$150	5th	\$50
3rd	\$100	6th	\$30

Rosettes to 8th place

7-ELEVEN SHETLAND GRAND NATIONAL

1st	\$100 Voucher & Trophy
2nd	\$50 Voucher
3rd	\$25 Voucher

(Horseland Vouchers)

Discover the 39 Year Service Guarantee

At ULR Land Rover, we've been specialising in Land Rover products for thirty nine years. Our large selection of new and used models is second to none, with an after sales service that's quite unique. We offer more, because we offer the largest range of genuine Land Rover parts and accessories in Australia, together with a fully equipped workshop staffed by Land Rover factory trained specialists who know what these exceptional vehicles are all about.

Whether your interest is the new Land Rover range of Defender, Discovery or Range Rover, or a good condition used vehicle or simply better service, you can't go past ULR. With 39 years of specialised service experience, we're a long way down the track.



Land Rover Specialists

ULR Land Rover Pty. Ltd. LMCT 1886
1303 Malvern Road, Malvern 3144
Telephone (03) 822 0211
Fax: (03) 822 7019

